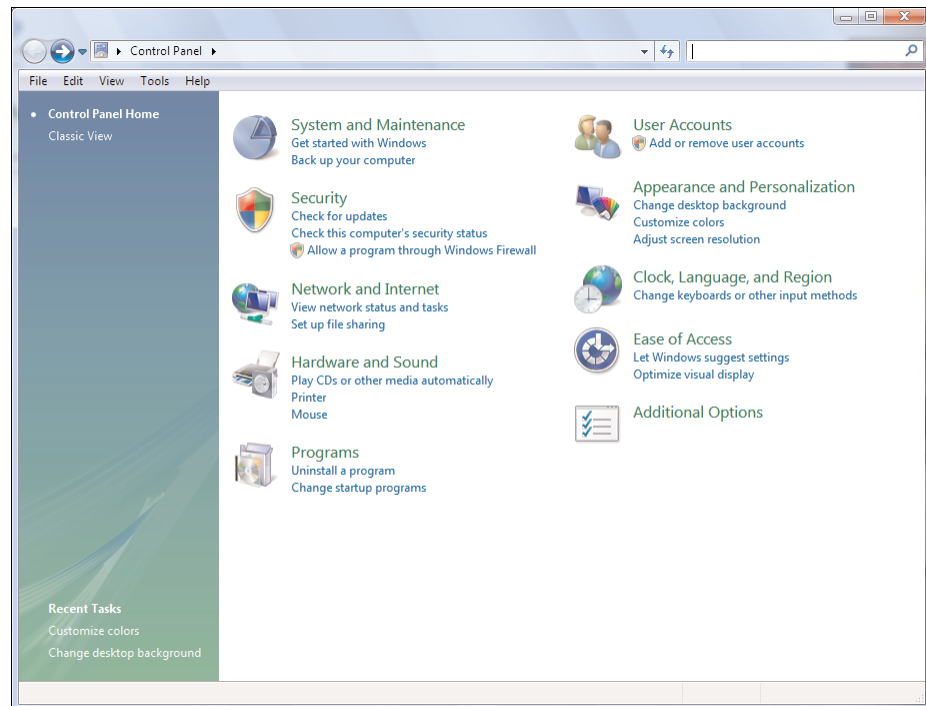


Windows Vista Figure Submittal Standards

For Grayscale books

I Click the Start button (lower left of the Taskbar). In the side bar of the pop-up menu, click on Control Panel.

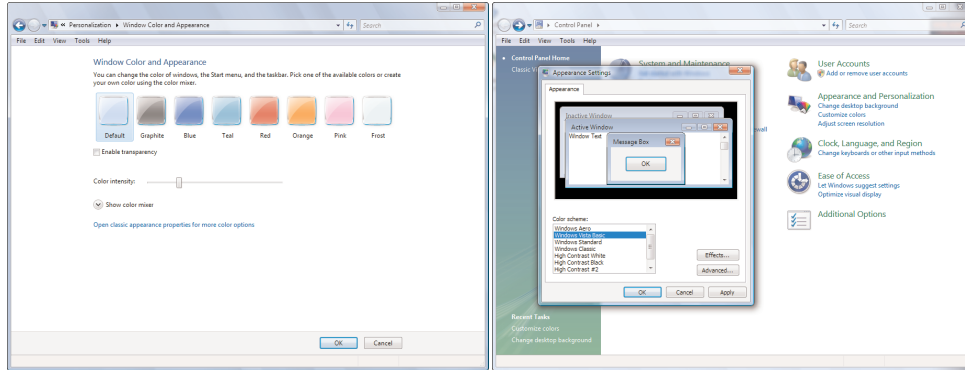
1. In the sidebar on the left hand side of the window click "Control Panel Home".
2. Under "Appearance and Personalization," click on "Change desktop background."
3. Under "Picture Location," select Solid Colors and click the white swatch (it will change the desktop instantly to white), then click OK and you will be returned to the Control Panel.



2

Windows Display Settings

11 Click on "Change the color scheme." Windows Vista Basic is the default and should be left as is. If "Change the color scheme" is not an option follow these steps first. Click "Customize Colors" under "Appearance and Personalization". In the "Window Color and Appearance" window click on "Open classic appearance properties for more color options" link at the bottom of the window. In the "Appearance Settings" window choose "Windows Vista Basic" from the Color scheme list and click apply.



1. Use the Effects button and uncheck all boxes, then click OK.
2. Use the Advanced button and begin making changes in the fonts, sizes and color settings. For each, use the Item dropdown menu and select the appropriate item from the following:
 - a. 3D Objects – Click on Color 1, then Other. Enter the following RGB values: R=240, G=240, B=240. Then click on "Add to custom colors" and OK. (You can use that swatch any time in the future.)
 - b. Active Title Bar – Set the size of the bar to 18. Click on Color 1, then Other. Enter the following RGB values: R=244, G=244, B=244. Then click on "Add to custom colors" and OK. (You can use that swatch any time in the future.)
Select Arial, size 10, and click the "B" button to make the font bold.
 - c. Active Window Border – Set the size to 5. Click on Color 1, then Other. Enter the following RGB values: R=180, G=180, B=180. Then click on "Add to custom colors" and OK. (You can use that swatch any time in the future.)
 - d. Application Background – Click on Color 1, then Other. Enter the following RGB values: R=170, G=170, B=170. Then click on "Add to custom colors" and OK. (You can use that swatch any time in the future.)
 - e. Caption Buttons – Leave the size at 18, which is the default.
Icon – Set the size to 32., set/leave the font at Segoe UI (default). Change the size to 8.

- f. Icon Spacing (Horizontal) – Set size at 50.
- g. Icon Spacing (Vertical) – Set size at 50.
- h. Inactive Title Bar – Set size at 18. Click on Color 1, then Other. Enter the following RGB values: R=170, G=170, B=170. Then click on “Add to custom colors” and OK. (You can use that swatch any time in the future.)

Set the font to Arial, size 10, and click on Color 1, then Other. Enter the following RGB values: R=144, G=144, B=144. Then click on “Add to custom colors” and OK. (You can use that swatch any time in the future.)
- i. Inactive Window Border – Set the size to 5. Click on Color 1, then click on the white swatch.
- j. Menu – Set size to 18. Click on Color 1, then click on the white swatch.
- k. Message Box – Set font to Arial size 10, and set/leave font color to black. (R=0, G=0, B=0)
- l. Palette Title – Set font to Arial size 10, and set/leave font color to black. (R=0, G=0, B=0)
- m. Scrollbar – Set to size 18.
- n. Selected Items – Set size at 18. Click on Color 1, then Other. Enter the following RGB values: R=51, G=153, B=255. (This should be the default setting.)
- o. ToolTip – Set Color 1 to white (R=255, G=255, B=255). Then, set the font to Arial size 9, and set the color to black (R=0, G=0, B=0).
- p. Window – Set Color 1 to white (R=255, G=255, B=255).

This completes the setup for grayscale books. Make certain that you save the scheme as Wiley Grayscale Scheme.

For 4-color Wiley books

The only difference in the grayscale appearance settings is the color of the desktop. It should be possible to select the Wiley Grayscale Scheme, go to the Desktop and make the following adjustments:

Under “Appearance and Personalization,” click on “Change desktop background.”

Under “Picture Location,” select Solid Colors and click More button. Then, change the color settings to R=131, G=158, B=212. Click OK and click OK again. (it will change the desktop instantly to a medium blue

Resave the scheme as Wiley 4-Color Scheme.